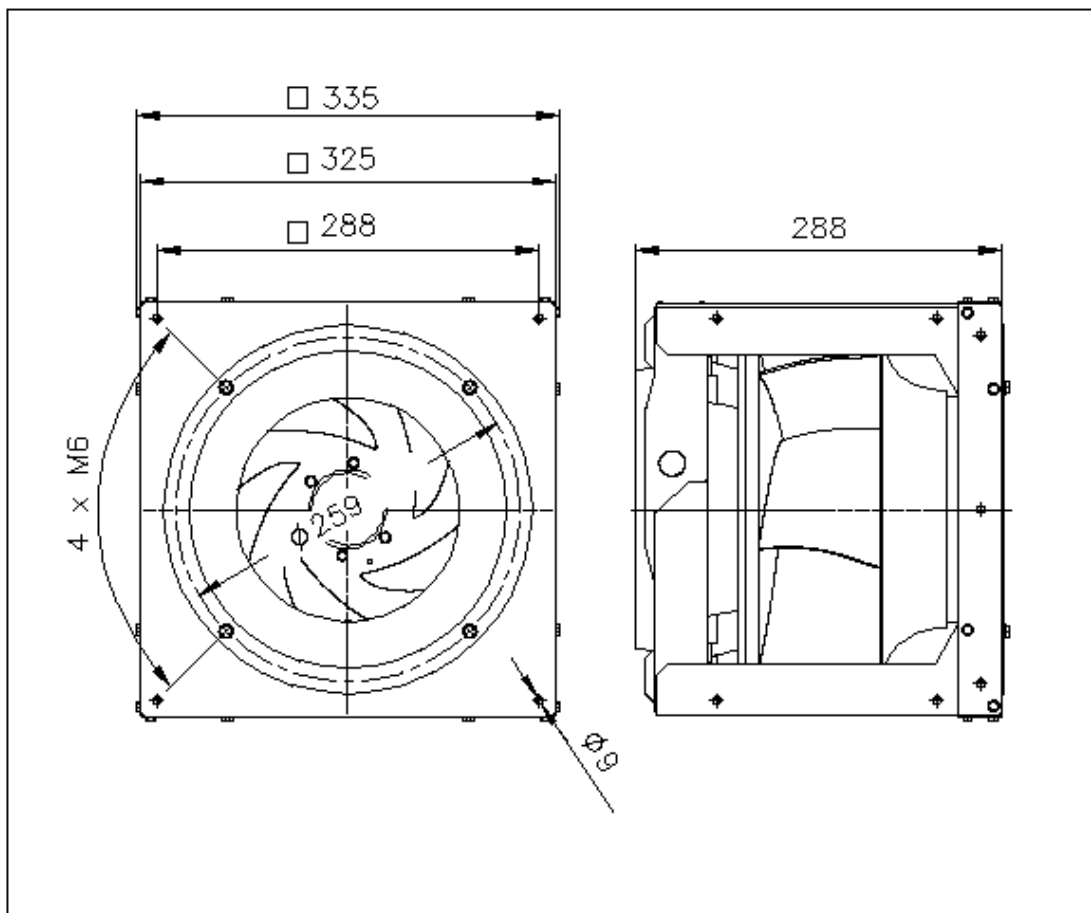


Technical data of the fan: COPRA PA-C25-EC56-C0000

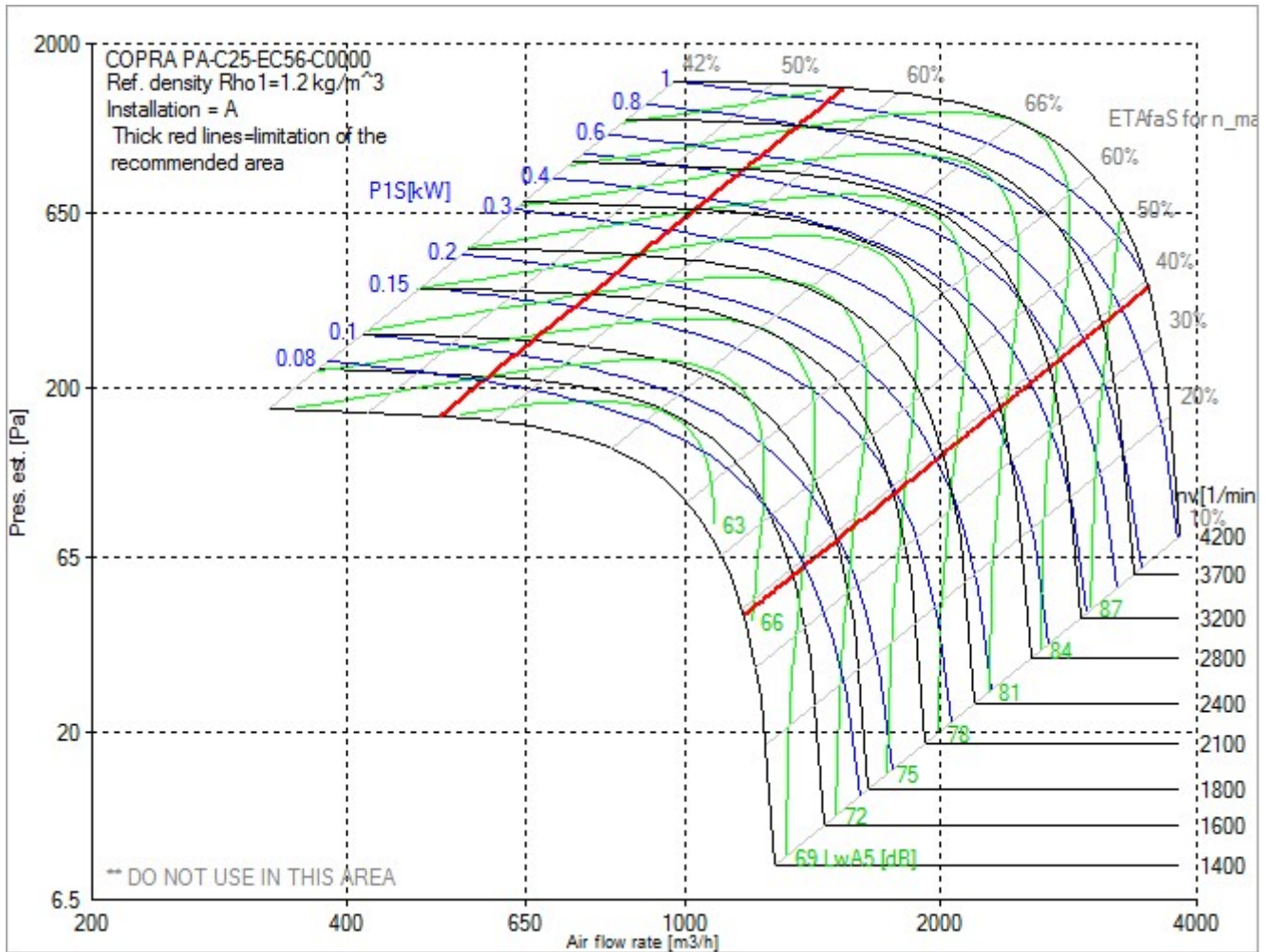
fulfills the ErP requirements 2015

Description	Value	Dimension
Fan weight	22	kg
Feed data		
Main's frequency (f _N)	50/60	Hz
Voltage (U _N)	3~	400 V
Phases-Voltage-Frequency	3~400-50	V-Hz
operational limits		
Max. fan speed (n _{vmax})	4200	min ⁻¹
Max. absorbed power of the system (P _{maxS})	1.30	kW
max. current: Inverter out resp. control unit in (I _{max})	2.0	A
Temperature range for conveying medium (t _{min} ... t _{max})	-20...40	C
ErP-Data at best efficiency and density - kg/m³		
measurement- / efficiency category	A / static	
design status of VSD	VSD is integrated	
overall efficiency (ETA _{opt})	71.0	%
achieved efficiency grade (N _{ist})	80.8	
required efficiency grade in 2013 / 2015 (N)	58 / 62	
Air flow rate (V _{opt})	2458	m ³ /h
pressure rise (dp _{opt})	1201	Pa
Fan speed (n _{vopt})	4200	min ⁻¹
motor power input (P _{1opt})	1.16	kW
specific ratio (d _{dpopt})	1.012	

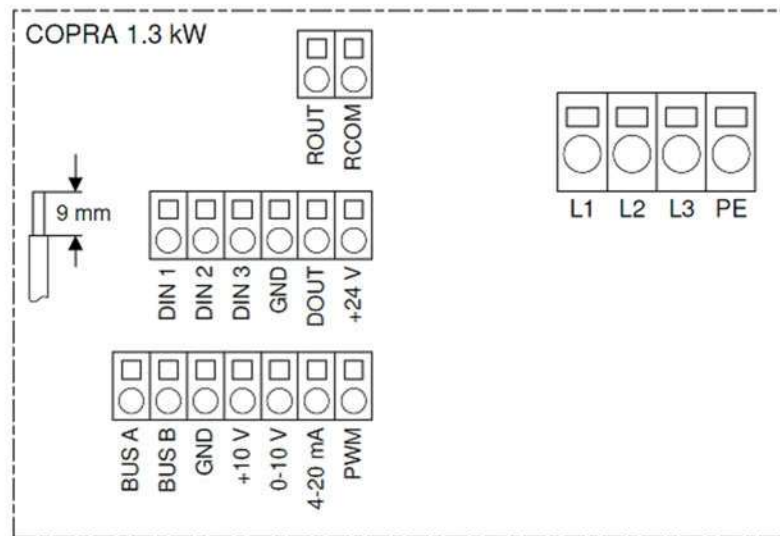
Dimensions



Fan curve to COPRA PA-C25-EC56-C0000



Wiring diagram



13-07-22 640